



American Maplan Corporation  
Press Contact: PW Marketing  
Tel./Fax +49 40 765 00 686  
E-mail: wagner@pwmarketing.de  
www.maplan.com

## PRESS RELEASE

*Modern PVC fences are in high demand, and AMC's product line offers a variety of solutions in the market*

### **Building fences with American Maplan's Extrusion Solutions**

With the ever increasing demand in the market for long lasting, durable and maintenance-free PVC fencing, American Maplan has focused its resources on specialized technology and currently offers several tooling systems to complement their offering of extruders, custom screw designs and downstream equipment.

American Maplan's fence tooling solutions utilize proven single and dual spider pipe head technology. The RK-single spider head, provided as four heads to cover 0.5-10 in diameter or the AMC patented RD-dual spider head as two heads to cover 0.5-10 in diameter are available. The first tooling solution uses the RK or RD die head with a standard round pin and bushing sets. Teflon pre-formers mounted to the pin stretch the PVC to the shape required for hollow post, rail or picket profiles.

The second tooling solution also uses the RK or RD die head , but the standard round pin and bushing are replaced with the profiled pin and bushing set. This system offers the highest level of wall control using profiled exit tooling and external two axis adjustment of the bushing. This reduces the amount of stretching before calibration allowing for tighter corner radius profiles and tight tolerance for wall thickness control.

American Maplan extends its tooling success with the use of our proven co-extrusion technology, both in single and dual output configurations. When used with AMC's die heads, it provides maximum cap stock utilization, thus saving raw material cost due to distribution control. Dual strand co-extrusion saves capital investment and floor space due to the innovative use of a single co-extruder for dual strands.

**The text and photograph of this press release can be downloaded from [www.maplan.com/News/Press Releases](http://www.maplan.com/News/Press_Releases)**



A unique calibration system that allows for higher line speeds, quicker product change over and capital equipment savings over conventional dry calibration technology has been developed at American Maplan. This is accomplished using a calibration sleeve and template system designed to fit into standard vacuum tanks, eliminating the requirement for a profile calibration table.

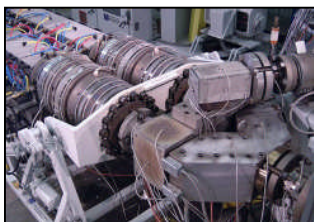
American Maplan offers a full range of extruder options and downstream equipment line for a *Total Extrusion Solution* including dual chamber vacuum tanks, spray cooling tanks, complete line of pullers including belt and caterpillar design, cut off saws and guillotine cutters.

American Maplan Corporation, Battenfeld Extrusionstechnik and Battenfeld Extrusion Systems Ltd. in China utilize their synergies to develop process machineries, dies, screws and downstream equipment that provide a *Total Extrusion Solution* for the price and performance needs of the customer.

For more information, contact American Maplan at 620-241-6843 or [welcome@maplan.com](mailto:welcome@maplan.com).

###

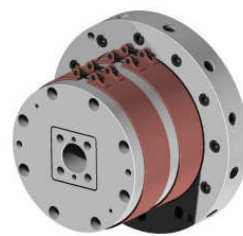
**Photos:**



*Dual Strand Co-Extrusion*



*Fence Final Product*



*Adjustable Square Pin & Bushing Set*



For further information please contact:

**Kristi Northcutt**  
Marketing Coordinator  
Tel: +1 620 798 2304  
Fax: +1 620 241 2142  
welcome@maplan.com  
www.maplan.com

2742 Characters  
481 Words

Ref. : AMC 0413 e pr  
Photos : 041301, 041302, 041303  
Date : April 2007